

# 2025



**RIPLEY POWER  
AND LIGHT**

**YOUR HOMETOWN  
ELECTRIC PROVIDER**





# RIPLEY POWER AND LIGHT COMPANY

Ripley Power and Light Company is a public utility serving Ripley, Henning, Halls and Gates. Our mission is to provide the best service possible at the lowest possible cost. We buy electricity from the Tennessee Valley Authority, which offers some of the lowest rates in the country. Our residential and commercial rates are on our website: [ripleypower.com](http://ripleypower.com).

## YOUR UTILITY BILL

Your bill is based on the amount of electricity you use. This varies each month, depending on the number of days in the billing period, the number of people in your home and the weather.

## OUTAGE MANAGEMENT SYSTEM

Our Outage Management System will know your location when you report an outage after hours from a phone with a number that is connected to your account. All customers are encouraged to update their phone numbers. See complete instructions, below.

## SECURITY LIGHTS

You can lease a security light from us to provide extra visibility in your yard at night. Activated by photocells sensitive to darkness, our lights turn on at dusk and off at dawn.

## HELP YOUR NEIGHBORS IN NEED

Ripley Power and Light administers the Plus One Program at no cost to help those in need pay their utility bills. You can contribute to the program with a one-time donation or through your utility bill.

## NEW RESIDENTIAL CUSTOMERS

Most of the time, we can turn on your utilities the same day you request them. You will be asked to make a deposit.

- **Moving?** Tell us in advance if you plan to move out of town or transfer utility services to another location within our system. We charge \$20 to transfer electric services; an additional deposit may be required depending on your location.
- **Building a new home or business?** Call us before you start. We will help you get your electricity in a timely manner.

## FINANCING

Ripley Power and Light offers low-interest financing to customers who purchase and install an energy-efficient electric heat pump through one of our approved dealers. Payments are on your monthly electric bill.

## STREET AND TRAFFIC LIGHTS, TREES

We maintain street and traffic lights and trim trees and other vegetation touching power lines. If you see a light not working properly or a tree growing into a power line, call or email us with the location.

## HAVE AN OUTAGE?

The next time you have an outage, just text #OUT to 888-655-1841.

Ripley Power and Light's Outage Management system will know your location, and we'll immediately begin our efforts to locate the cause of the outage and restore your power.

## DO WE HAVE ALL OF YOUR PHONE NUMBERS? Ripley Power and Light encourages customers to ...

### STEP ONE:

- Update all phone numbers – landlines and cellphone numbers – in your household.
- Visit [www.ripleypower.com](http://www.ripleypower.com) under the 'Report an Outage' tab or call 731-635-2323.

### STEP TWO:

- Save our number – 888-655-1841 – in your cellphone.
- To opt in, text #RIPLEY to 888-655-1841.
- You'll receive the message, "Welcome to Ripley Power and Light's text msg service ..."

**Emergencies:** Ripley Power and Light employees are on call 24 hours a day to provide reliable and quality electric service. We are prepared to respond quickly in an emergency. Call us immediately at 731-635-2323 or 731-836-7595 if the electric power is out, a power line is down or if there is another electrical emergency.

## HOURS AND LOCATIONS

150 S. Main St. in Ripley ■ 409 S. Church St. in Halls  
Monday to Thursday: 7:30am-5pm ■ Friday: 7:30am to 4:30pm.

## WAYS TO PAY YOUR BILL

*(When paying by mail, in person or through night deposit, enclose the bottom portion of your bill.)*

1. **Online through Customer Portal:** At [ripleypower.com](http://ripleypower.com).
2. **Ripley Power and Light App:** Download to smart device through Apple Store or Google Play.
3. **In person:** At our Ripley or Halls office during normal working hours.
4. **24-hour bill pay:** By credit card or cash through a secure machine (kiosk) in the drive-thru lanes at our Ripley and Halls offices.
5. **Bank draft:** Your bank deducts the amount you owe from your bank account the day the bill is due. Each month we send your bank the amount you owe, and we send you a copy of your bill.
6. **Mail:** In the envelope that comes with your bill.
7. **Night deposit:** Using the secure deposit boxes at our Ripley and Halls locations.

*(If you choose to pay your utility bills in one of the above ways, you can sign up for e-statements and receive your bill through email. Customers who get e-statements will see their bill before other customers receive their bill in the mail.)*

8. **Prepay Program:** Pay for electricity before you use it. A daily text or email gives you the amount of electricity you have left on your account so you know when to buy more. You can add money to your account at our offices or through the customer portal, mail or kiosk. Prepay customers cannot use bank draft or receive e-statements.

# EMPLOYEES



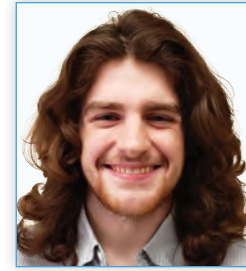
**Mike Allmand**  
*President and CEO*



**Joey Beavers**  
*Operations Superintendent*



**Matthew Bell**  
*Lineman*



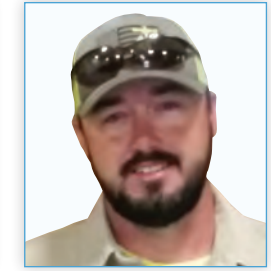
**Cameron Brasfield**  
*Systems Administrator*



**Ty Buckner**  
*Apprentice Lineman*



**Gina Choat**  
*Billing Coordinator*



**Chris Conrad**  
*Lineman*



**Jerry Cunningham**  
*Lineman*



**Rachel Daniels**  
*Customer Service Representative*



**Allan Deloach**  
*Tree Crew*



**David Deloach**  
*Lineman*



**Tracy Etheridge**  
*Executive Administrative Assistant*



**Toni Gay**  
*Customer Service Representative*



**Ronnie Hunter**  
*Lineman*



**Ashton Land**  
*Apprentice Lineman*



**Jessica Lee**  
*Customer Service Representative*



**Dallas Midkiff**  
*Tree Crew*



**Doris Montgomery**  
*Customer Service Representative*



**Chris Mooney**  
*Head of Engineering*



**Bill Newman**  
*Lineman*



**Stacy Nolen**  
*Customer Service Representative*



**Scott Ozment**  
*Line Foreman*



**Chris Sanders**  
*Lineman*



**Jenny Skinner**  
*Ripley Office Manager and Accountant*



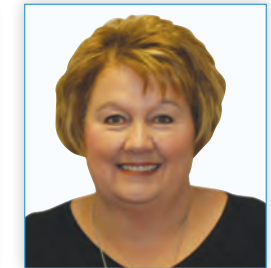
**Greg Thurmond**  
*Meter Technician*



**Valerie Turnbow**  
*Accountant*



**Caleb Wright**  
*Lineman*



**Kami Wright**  
*Halls Office Manager*

The Lauderdale  
County Courthouse  
gets a blanket of  
snow.

Your heating  
system is your  
highest energy  
user in cold  
weather. The  
colder it is outside,  
the harder your  
heating system  
works. You can  
save money by  
keeping your  
thermostat as low  
as possible to still  
be comfortable in  
your home.



# JANUARY



**RIPLEY OFFICE:**  
150 South Main Street  
(731) 635-2323

**HALLS OFFICE:**  
409 South Church Street  
(731) 836-7595

**RIPLEYPOWER.COM**

SUNDAY	MONDAY	TUESDAY	WEDNESDAY	THURSDAY	FRIDAY	SATURDAY
<p><b>DECEMBER</b></p> <p>S M T W T F S</p> <p>1 2 3 4 5 6 7</p> <p>8 9 10 11 12 13 14</p> <p>15 16 17 18 19 20 21</p> <p>22 23 24 25 26 27 28</p> <p>29 30 31</p>	<p><b>FEBRUARY</b></p> <p>S M T W T F S</p> <p>1</p> <p>2 3 4 5 6 7 8</p> <p>9 10 11 12 13 14 15</p> <p>16 17 18 19 20 21 22</p> <p>23 24 25 26 27 28</p>	31	<p><b>New Year's Day</b> 1</p> <p>Winter Break, No School</p> <p>RPL Offices Closed</p>	<p>2</p> <p>Winter Break, No School</p>	<p>3</p> <p>Lauderdale Co. School Board, 6pm</p> <p>Winter Break, No School</p>	4
5	<p>6</p> <p>Henning Board, 5pm</p> <p>Ripley Board, 6pm</p> <p>Gates Board, 6:30pm</p> <p>Halls Board, 7pm</p> <p>Teacher In-Service, No School</p> 	<p>7</p> <p>Teacher Professional Development Day, No School</p>	8	<p>9</p> <p>RPL Board, noon</p>	10	11
12	<p>13</p> <p>Lauderdale County Commission, 6pm</p> 	14	15	16	17	18
19	<p>20</p> <p><b>Martin Luther King Jr. Day</b></p> <p><b>Inauguration Day</b></p> <p>No School</p> <p>RPL Offices Closed</p> 	21	22	23	24	25
26	27	28	29	30	31	1

Sports play a big role in student lives. Pictured, clockwise, from top left: A Halls-Ripley High school football game, Ripley High soccer and volleyball teams, Halls Junior High volleyball team, Ripley-Halls basketball game, and Halls football players visiting an elementary school classroom.



You can use your cell phone to report an outage by text. Visit the "Report an Outage" tab at [ripleypower.com](http://ripleypower.com). You'll find the simple steps to set this up on your cell phone.



# FEBRUARY



**RIPLEY OFFICE:**  
150 South Main Street  
(731) 635-2323

**HALLS OFFICE:**  
409 South Church Street  
(731) 836-7595

**RIPLEYPOWER.COM**

SUNDAY	MONDAY	TUESDAY	WEDNESDAY	THURSDAY	FRIDAY	SATURDAY
<b>JANUARY</b> S M T W T F S 1 2 3 4 5 6 7 8 9 10 11 12 13 14 15 16 17 18 19 20 21 22 23 24 25 26 27 28 29 30 31	<b>MARCH</b> S M T W T F S 1 2 3 4 5 6 7 8 9 10 11 12 13 14 15 16 17 18 19 20 21 22 23 24 25 26 27 28 29 30 31	28	29	30	31	1
<b>Groundhog Day</b> 2	Henning Board, 5pm 3 Ripley Board, 6pm Gates Board, 6:30pm Halls Board, 7pm	4	5	Lauderdale Co. School Board, 6pm 6	7	8
9	Lauderdale County Commission, 6pm 10	11	12	RPL Board, noon 13	<b>Valentine's Day</b> 14	15
16	<b>Presidents' Day</b> 17 <i>No School</i> <i>RPL Offices Closed</i>	18	19	20	21	22
23	24	25	26	27	28	1

The Junior Auxiliary of Lauderdale County was founded on the principles of helping children and making a difference in their lives. The nonprofit also gives its members the opportunity to contribute to their community. Pictured, clockwise from top left: Children dress up for the Dolly & Me Tea Party. An auxiliary member reads during the summer reading program at the library. The Stuff the Bus project collects and distributes back-to-school supplies to students. A group of members and other volunteers show off some of the collected school supplies. Members collect prom dresses for high school girls. Members attend their Havana Nights – 2024 Charity Ball. Learn more on the Junior Auxiliary's Facebook page.





# MARCH

SUNDAY	MONDAY	TUESDAY	WEDNESDAY	THURSDAY	FRIDAY	SATURDAY			
<b>FEBRUARY</b> S M T W T F S 1 2 3 4 5 6 7 8 9 10 11 12 13 14 15 16 17 18 19 20 21 22 23 24 25 26 27 28	<b>APRIL</b> S M T W T F S 1 2 3 4 5 6 7 8 9 10 11 12 13 14 15 16 17 18 19 20 21 22 23 24 25 26 27 28 29 30	25	26	27	28	1			
2	Henning Board, 5pm Ripley Board, 6pm Gates Board, 6:30pm Halls Board, 7pm	3	4	Ash Wednesday	5	6	Lauderdale Co. School Board, 6pm	7	8
<b>Daylight Saving            Time Begins</b>	9	Lauderdale County Commission, 6pm	10	11	12	RPL Board, noon	13	14	15
16	<b>St. Patrick's Day</b> Spring Break, No School All Week	17	18	19	20	<b>First Day of            Spring</b>	21	22	
23	24	25	26	27	28	UT Extension Celebration Picnic	29		
30	31								



**RIPLEY OFFICE:**  
 150 South Main Street  
 (731) 635-2323  
**HALLS OFFICE:**  
 409 South Church Street  
 (731) 836-7595  
**RIPLEYPOWER.COM**

Gardens come to life with the help of the Master Gardeners of Lauderdale County. The program is through the Lauderdale County UT Extension office.



# APRIL

SUNDAY	MONDAY	TUESDAY	WEDNESDAY	THURSDAY	FRIDAY	SATURDAY
<b>MARCH</b> S M T W T F S 1 2 3 4 5 6 7 8 9 10 11 12 13 14 15 16 17 18 19 20 21 22 23 24 25 26 27 28 29 30 31	<b>MAY</b> S M T W T F S 1 2 3 4 5 6 7 8 9 10 11 12 13 14 15 16 17 18 19 20 21 22 23 24 25 26 27 28 29 30 31	<b>April Fool's Day</b> 1	2	Lauderdale Co. School Board, 6pm 3	4	5
6	Henning Board, 5pm 7 Ripley Board, 6pm Gates Board, 6:30pm Halls Board, 7pm	8	9	RPL Board, noon 10	11	12
<b>Palm Sunday</b> 13	Lauderdale County Commission, 6pm 14	<b>Tax Day</b> 15	16	17	<b>Good Friday</b> 18 <b>National Lineman Appreciation Day</b> <i>No School</i> <i>RPL Offices Closed</i>	19
<b>Easter Sunday</b> 20	21	<b>Earth Day</b> 22	<b>Administrative Professionals' Day</b> 23	24	<b>Arbor Day</b> 25	26
27	28	29	30	1	2	3



**RIPLEY OFFICE:**  
 150 South Main Street  
 (731) 635-2323  
**HALLS OFFICE:**  
 409 South Church Street  
 (731) 836-7595  
**RIPLEYPOWER.COM**

The Ripley City Park swimming pool and water slides open daily from late May through early August.



# MAY

SUNDAY	MONDAY	TUESDAY	WEDNESDAY	THURSDAY	FRIDAY	SATURDAY
<p><b>APRIL</b></p> <p>S M T W T F S</p> <p>1 2 3 4 5</p> <p>6 7 8 9 10 11 12</p> <p>13 14 15 16 17 18 19</p> <p>20 21 22 23 24 25 26</p> <p>27 28 29 30</p>	<p><b>JUNE</b></p> <p>S M T W T F S</p> <p>1 2 3 4 5 6 7</p> <p>8 9 10 11 12 13 14</p> <p>15 16 17 18 19 20 21</p> <p>22 23 24 25 26 27 28</p> <p>29 30</p>	29	30	<p><b>National Day of Prayer</b> 1</p> <p>Lauderdale Co. School Board, 6pm</p>	2	3
4	<p><b>Cinco de Mayo</b> 5</p> <p>Henning Board, 5pm</p> <p>Ripley Board, 6pm</p> <p>Gates Board, 6:30pm</p> <p>Halls Board, 7pm</p>	6	7	RPL Board, noon 8	9	10
<p>Mother's Day 11</p>	<p>Lauderdale County Commission, 6pm 12</p>	13	14	<b>RHS Graduation</b> 15	<b>HHS Graduation</b> 16	<b>Armed Forces Day</b> 17
18	19	20	21	<p>Faculty/Staff Recognition, Early Student Dismissal 22</p>	Last Day of School 23	24
25	<p><b>Memorial Day</b> 26</p> <p>RPL Offices Closed</p>	27	28	29	30	31



**RIPLEY OFFICE:**  
 150 South Main Street  
 (731) 635-2323

**HALLS OFFICE:**  
 409 South Church Street  
 (731) 836-7595

**RIPLEYPOWER.COM**

Juneteenth—on June 19 each year—is a new federal holiday to celebrate the ending of slavery in the United States. It became a national holiday in 2021.



Your cooling system is your highest energy user in hot weather. Set your thermostat at 78 degrees or at the highest setting you can and still be comfortable. And, remember to set the thermostat at a higher temperature when you go on vacation.



# JUNE

SUNDAY	MONDAY	TUESDAY	WEDNESDAY	THURSDAY	FRIDAY	SATURDAY																																																																																					
1 Henning Board, 5pm Ripley Board, 6pm Gates Board, 6:30pm Halls Board, 7pm	2 	3	4	5 Lauderdale Co. School Board, 6pm	6	7																																																																																					
8 Lauderdale County Commission, 6pm	9	10	11 	12 RPL Board, noon	13	14 <b>Flag Day</b>																																																																																					
15 <b>Father's Day</b>	16	17	18 	19 <b>Juneteenth</b> <i>RPL Offices Closed</i>	20 <b>First Day of Summer</b>	21																																																																																					
22	23	24	25 	26	27	28																																																																																					
29	30	1	2	3	<p><b>MAY</b></p> <table border="1"> <tr><td>S</td><td>M</td><td>T</td><td>W</td><td>T</td><td>F</td><td>S</td></tr> <tr><td></td><td></td><td></td><td>1</td><td>2</td><td>3</td><td></td></tr> <tr><td>4</td><td>5</td><td>6</td><td>7</td><td>8</td><td>9</td><td>10</td></tr> <tr><td>11</td><td>12</td><td>13</td><td>14</td><td>15</td><td>16</td><td>17</td></tr> <tr><td>18</td><td>19</td><td>20</td><td>21</td><td>22</td><td>23</td><td>24</td></tr> <tr><td>25</td><td>26</td><td>27</td><td>28</td><td>29</td><td>30</td><td>31</td></tr> </table> <p><b>JULY</b></p> <table border="1"> <tr><td>S</td><td>M</td><td>T</td><td>W</td><td>T</td><td>F</td><td>S</td></tr> <tr><td></td><td></td><td></td><td>1</td><td>2</td><td>3</td><td>4</td><td>5</td></tr> <tr><td>6</td><td>7</td><td>8</td><td>9</td><td>10</td><td>11</td><td>12</td></tr> <tr><td>13</td><td>14</td><td>15</td><td>16</td><td>17</td><td>18</td><td>19</td></tr> <tr><td>20</td><td>21</td><td>22</td><td>23</td><td>24</td><td>25</td><td>26</td></tr> <tr><td>27</td><td>28</td><td>29</td><td>30</td><td>31</td><td></td><td></td></tr> </table>		S	M	T	W	T	F	S				1	2	3		4	5	6	7	8	9	10	11	12	13	14	15	16	17	18	19	20	21	22	23	24	25	26	27	28	29	30	31	S	M	T	W	T	F	S				1	2	3	4	5	6	7	8	9	10	11	12	13	14	15	16	17	18	19	20	21	22	23	24	25	26	27	28	29	30	31		
S	M	T	W	T	F	S																																																																																					
			1	2	3																																																																																						
4	5	6	7	8	9	10																																																																																					
11	12	13	14	15	16	17																																																																																					
18	19	20	21	22	23	24																																																																																					
25	26	27	28	29	30	31																																																																																					
S	M	T	W	T	F	S																																																																																					
			1	2	3	4	5																																																																																				
6	7	8	9	10	11	12																																																																																					
13	14	15	16	17	18	19																																																																																					
20	21	22	23	24	25	26																																																																																					
27	28	29	30	31																																																																																							



**RIPLEY OFFICE:**  
150 South Main Street  
(731) 635-2323

**HALLS OFFICE:**  
409 South Church Street  
(731) 836-7595

**RIPLEYPOWER.COM**

Across the top, Ripley and Halls residents celebrate the Fourth of July with parades. Across the bottom, the annual Tomato Festival celebrates the area's famous tomatoes.



Ripley Power and Light meters are read on the first day of each month. Bills are usually mailed the next day. Customers who sign up for e-statements will get their bill in an email that day. To sign up for e-statements, go to the "My Account" section at [ripleypower.com](http://ripleypower.com).





# JULY

SUNDAY	MONDAY	TUESDAY	WEDNESDAY	THURSDAY	FRIDAY	SATURDAY
29	30	1	2	Lauderdale Co. School Board, 6pm 3	<b>Independence Day</b> 4 <i>RPL Offices Closed</i>	5
6	Henning Board, 5pm 7 Ripley Board, 6pm Gates Board, 6:30pm Halls Board, 7pm	8	9	RPL Board, noon 10	Tomato Festival 11	Tomato Festival 12
13	Lauderdale County Commission, 6pm 14	15	16	17	18	19
20	21	22	23	24	25	26
27	28	29	30	31	<b>JUNE</b> S M T W T F S 1 2 3 4 5 6 7 8 9 10 11 12 13 14 15 16 17 18 19 20 21 22 23 24 25 26 27 28 29 30	<b>AUGUST</b> S M T W T F S 1 2 3 4 5 6 7 8 9 10 11 12 13 14 15 16 17 18 19 20 21 22 23 24 25 26 27 28 29 30 31



**RIPLEY OFFICE:**  
 150 South Main Street  
 (731) 635-2323

**HALLS OFFICE:**  
 409 South Church Street  
 (731) 836-7595

**RIPLEYPOWER.COM**

Sparky and members of the Ripley Fire Department greet Ripley Primary students on the first day of school. On the far right, participants "Walk the Block" to raise money for the Alzheimers Foundation.



# AUGUST

SUNDAY	MONDAY	TUESDAY	WEDNESDAY	THURSDAY	FRIDAY	SATURDAY	
<p><b>JULY</b></p> <p>S M T W T F S</p> <p>1 2 3 4 5</p> <p>6 7 8 9 10 11 12</p> <p>13 14 15 16 17 18 19</p> <p>20 21 22 23 24 25 26</p> <p>27 28 29 30 31</p>	<p><b>SEPTEMBER</b></p> <p>S M T W T F S</p> <p>1 2 3 4 5 6</p> <p>7 8 9 10 11 12 13</p> <p>14 15 16 17 18 19 20</p> <p>21 22 23 24 25 26 27</p> <p>28 29 30</p>	29	30	31	1	2	
3	<p>Henning Board, 5pm</p> <p>Ripley Board, 6pm</p> <p>Gates Board, 6:30pm</p> <p>Halls Board, 7pm</p>	4	5	6	7	8	9
10	<p>Lauderdale County Commission, 6pm</p>	11	12	13	14	15	16
17	18	19	20	21	22	23	
24	25	26	27	28	29	30	
31							



**RIPLEY OFFICE:**  
 150 South Main Street  
 (731) 635-2323

**HALLS OFFICE:**  
 409 South Church Street  
 (731) 836-7595

**RIPLEYPOWER.COM**



The Ripley Labor Day parade highlights the annual holiday. Bands, floats, decorated vehicles, honor guards and others fill the streets around the courthouse.



# SEPTEMBER



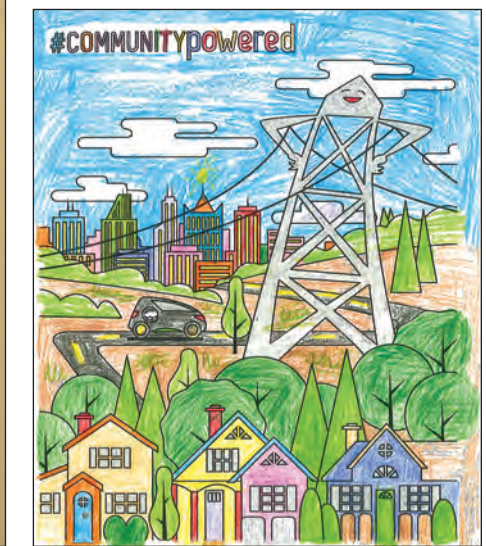
**RIPLEY OFFICE:**  
150 South Main Street  
(731) 635-2323

**HALLS OFFICE:**  
409 South Church Street  
(731) 836-7595

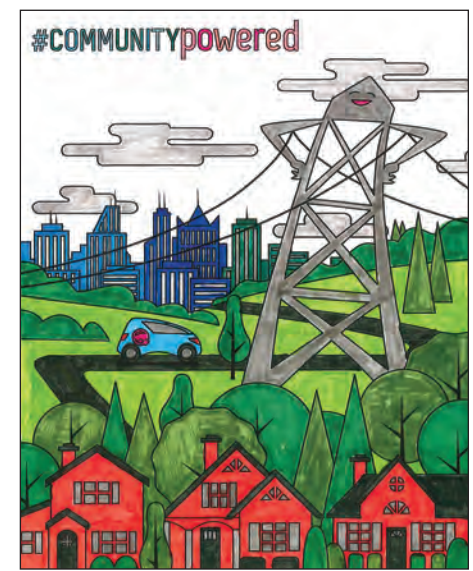
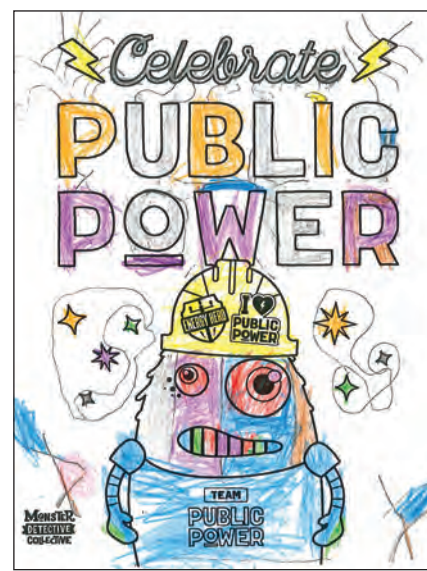
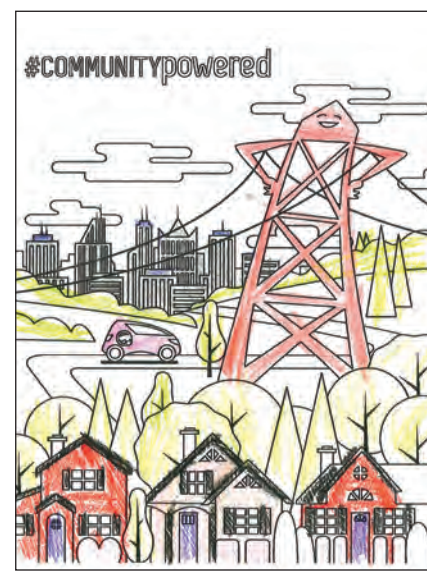
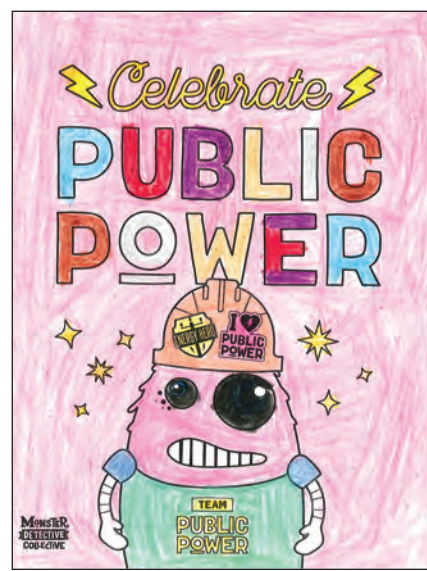
**RIPLEYPOWER.COM**

SUNDAY	MONDAY	TUESDAY	WEDNESDAY	THURSDAY	FRIDAY	SATURDAY
31	<b>Labor Day</b> 1 <i>RPL Offices Closed</i> <i>No School</i>	Halls Board, 7pm 2	3	Lauderdale Co. School Board, 6pm 4	5	6
7	Henning Board, 5pm 8 Lauderdale County Commission, 6pm	9	Lauderdale County Fair 10	<b>Patriot Day</b> 11 RPL Board, noon Lauderdale County Fair	Lauderdale County Fair 12	Lauderdale County Fair 13
14	15	16	17	18	19	20
21	<b>First Day of Fall</b> 22	23	24	25	26	27
28	29	30	1	2	<b>AUGUST</b> S M T W T F S 1 2 3 4 5 6 7 8 9 10 11 12 13 14 15 16 17 18 19 20 21 22 23 24 25 26 27 28 29 30 31	
					<b>OCTOBER</b> S M T W T F S 1 2 3 4 5 6 7 8 9 10 11 12 13 14 15 16 17 18 19 20 21 22 23 24 25 26 27 28 29 30 31	

We celebrate public electric power in October with a coloring contest for kindergarten through sixth grade students. Pictured, from left, are the 2024 winners: Kynlee Haynes, Fifth Grade; Chase McKee, First Grade; William Howell, Third Grade; Aubrey Childress, Second Grade; Tilly DiMartino, Fourth Grade; and Harper Harden, Second Grade.



Help us keep the streetlights on in Ripley, Halls, Gates and Henning. Call us or send us a message through the form at the bottom of our website if you see a streetlight out or blinking. Give us the pole number of the light or its exact location.



# OCTOBER

SUNDAY	MONDAY	TUESDAY	WEDNESDAY	THURSDAY	FRIDAY	SATURDAY		
<b>SEPTEMBER</b> S M T W T F S 1 2 3 4 5 6 7 8 9 10 11 12 13 14 15 16 17 18 19 20 21 22 23 24 25 26 27 28 29 30	<b>NOVEMBER</b> S M T W T F S 1 2 3 4 5 6 7 8 9 10 11 12 13 14 15 16 17 18 19 20 21 22 23 24 25 26 27 28 29 30	30	Squarecrows All Month, Lauderdale County Courthouse 1	Lauderdale Co. School Board, 6pm 2	3	4		
5	Henning Board, 5pm Ripley Board, 6pm Gates Board, 6:30pm Halls Board, 7pm Fall Break, <i>No School All Week</i> 	6	7	8	RPL Board, noon	9	10	11
12	<b>Columbus Day</b> Lauderdale County Commission, 6pm 	13	14	15	<b>National Boss's Day</b>	16	17	18
19	20	21	22	23	24	25		
26	27	28		29	30	<b>Halloween</b> 31	1	
								



**RIPLEY OFFICE:**  
 150 South Main Street  
 (731) 635-2323  
**HALLS OFFICE:**  
 409 South Church Street  
 (731) 836-7595  
**RIPLEYPOWER.COM**

A parade in downtown Ripley and a lunch at First United Methodist Church highlight Lauderdale County's Veterans Day events.



With darkness arriving so early these days, consider leasing a security light from Ripley Power and Light for your yard. Installation is free, and we add the cost of leasing the light to your monthly electric bill. Our lights automatically turn on at dusk and turn off at dawn.





# NOVEMBER



**RIPLEY OFFICE:**  
150 South Main Street  
(731) 635-2323

**HALLS OFFICE:**  
409 South Church Street  
(731) 836-7595

**RIPLEYPOWER.COM**

SUNDAY	MONDAY	TUESDAY	WEDNESDAY	THURSDAY	FRIDAY	SATURDAY
<b>OCTOBER</b> S M T W T F S 1 2 3 4 5 6 7 8 9 10 11 12 13 14 15 16 17 18 19 20 21 22 23 24 25 26 27 28 29 30 31	<b>DECEMBER</b> S M T W T F S 1 2 3 4 5 6 7 8 9 10 11 12 13 14 15 16 17 18 19 20 21 22 23 24 25 26 27 28 29 30 31	28	29	30	31	<b>All Saint's Day</b> 1
<b>Daylight Saving Time Ends</b> 2	Henning Board, 5pm 3 Ripley Board, 6pm Gates Board, 6:30pm Halls Board, 7pm	<b>Election Day</b> 4	5	Lauderdale Co. School Board, 6pm 6	7	8
9	Lauderdale County Commission, 6pm 10	<b>Veterans Day</b> 11 Veterans Day parade, downtown Ripley <i>RPL Offices Closed</i>	12	RPL Board, noon 13	14	15
16	17	18	19	20	21	22
23	Thanksgiving Break <i>No School All Week</i> 24	25	26	<b>Thanksgiving</b> 27 <i>RPL Offices Closed</i>	<b>Native American Heritage Day</b> 28 <i>RPL Offices Closed</i>	29
30						

Residents enjoy  
Ripley's Homestyle  
Christmas.



# DECEMBER



**RIPLEY OFFICE:**  
150 South Main Street  
(731) 635-2323

**HALLS OFFICE:**  
409 South Church Street  
(731) 836-7595

**RIPLEYPOWER.COM**

SUNDAY	MONDAY	TUESDAY	WEDNESDAY	THURSDAY	FRIDAY	SATURDAY
30 Henning Board, 5pm Ripley Board, 6pm Gates Board, 6:30pm Halls Board, 7pm	1	2	3	Lauderdale Co. School Board, 6pm 4	Homestyle Christmas, Ripley Court Square 5	Homestyle Christmas, Ripley Court Square 6
<b>Pearl Harbor Remembrance Day</b> 7 Homestyle Christmas, Ripley Court Square	Lauderdale County Commission, 6pm 8	9	10	RPL Board, noon 11	12	13
14	15	16	17	18	Half Day of School; Start of Christmas Break 19	20
<b>First Day of Winter</b> 21	22	23	<b>Christmas Eve</b> 24	<b>Christmas Day</b> 25 <i>RPL Offices Closed</i>	<i>RPL Offices Closed</i> 26	27
28	29	30	<b>New Year's Eve</b> 31	School Resumes for Students January 7 1	<b>NOVEMBER</b> S M T W T F S 1 2 3 4 5 6 7 8 9 10 11 12 13 14 15 16 17 18 19 20 21 22 23 24 25 26 27 28 29 30	<b>JANUARY</b> S M T W T F S 1 2 3 4 5 6 7 8 9 10 11 12 13 14 15 16 17 18 19 20 21 22 23 24 25 26 27 28 29 30 31

Ripley Power and Light employees are on call 24 hours a day to provide reliable and quality electric service. We are prepared to respond quickly in an emergency. Call us immediately at 731-635-2323 or 731-836-7595 if the electric power is out, a power line is down or if there is another electrical emergency.



**Ripley Power & Light Co.**  
150 S. Main St.  
Ripley, TN 38063

PRSR STD  
U.S. Postage  
PAID  
Ripley, TN  
Permit # 80