

RIPLLEY POWER AND LIGHT COMPANY



Your Hometown Electric Provider

Ripley Power and Light Company



Ripley Power and Light Company is a public utility serving Ripley, Henning, Halls and Gates. Our mission is to provide the best service possible at the lowest possible cost. We buy electricity from the Tennessee Valley Authority, which offers some of the lowest rates in the country. Our residential and commercial rates are on our website: ripleypower.com.

Ways to pay your bill

(When paying by mail, in person or through night deposit, enclose the bottom portion of your bill.)

■ Customer portal

- **Online:** At ripleypower.com.
- **Ripley Power and Light App:** Download to smart device through Apple Store or Google Play.

■ **In person:** At our Ripley or Halls office during normal working hours.

■ **24-hour bill pay:** By credit card or cash through a secure machine (kiosk) in the drive-thru lanes at our Ripley and Halls offices.

■ **Bank draft:** Your bank deducts the amount you owe from your bank account the day the bill is due. Each month we send your bank the amount you owe, and we send you a copy of your bill.

■ **Mail:** In the envelope that comes with your bill.

■ **Night deposit:** Using the secure deposit boxes at our Ripley and Halls locations.

(If you choose to pay your utility bills in one of the above ways, you can sign up for e-statements and receive your bill through email. Customers who get e-statements will see their bill before other customers receive their bill in the mail.)

■ **Prepay Program:** Pay for electricity before you use it. A daily text or email gives you the amount of electricity you have left on your account so you know when to buy more. You can add money to your account at our offices or through the customer portal, mail or kiosk. Prepay customers cannot use bank draft or receive e-statements.

Hours and locations

- 150 S. Main St. in Ripley
 - 409 S. Church St. in Halls
- We are open 7:30 a.m. to 5 p.m. Monday to Thursday and 7:30 a.m. to 4:30 p.m. Friday.

Your utility bill

Your bill is based on the amount of electricity you use. This varies each month, depending on the number of days in the billing period, the number of people in your home and the weather.

Security lights

You can lease a security light from us to provide extra visibility in your yard at night. Activated by photocells sensitive to darkness, our lights turn on at dusk and off at dawn.

Outage Management System

Our Outage Management System will know your location when you report an outage after hours from a phone with a number that is connected to your account.

- All customers are encouraged to update their phone numbers by visiting "Report an Outage" at ripleypower.com and filling out the form.
- You can also report an outage with a text by opting your cellphone number into our system one time at 888-655-1841 and texting #RIPLEY.
- See complete instructions on the back page of this calendar.

Help your neighbors in need

Ripley Power and Light administers the Plus One Program at no cost to help those in need pay their utility bills. You can contribute to the program by a one-time donation or through your utility bill.

New residential customers

Most of the time, we can turn on your utilities the same day you request them. You will be asked to make a deposit.

■ **Moving?** Tell us in advance if you plan to move out of town or transfer utility services to another location within our system. We charge \$20 to transfer electric services; an additional deposit may be required depending on your location.

■ **Building a new home or business?** Call us before you start. We will help you get your electricity in a timely manner.

Financing

Ripley Power and Light offers low-interest financing to customers who purchase and install an energy-efficient electric heat pump through one of our approved dealers. Payments are on your monthly electric bill.

Street and traffic lights, trees

We maintain street and traffic lights and trim trees and other vegetation touching power lines. If you see a light not working properly or a tree growing into a power line, call or email us with the location.

CEO and Board



*Mike Allmand
President and CEO*



*Phillip Jackson
Board Chairman*



*Minnie Stowe
Board Secretary*



*Austin Thompson
Board Member*



*Eunice Jenkins
Board Member*



*Kenny Parham
Board Member*

Employees



*Joey Beavers
Lineman*



*Matthew Bell
Apprentice Lineman*



*Cameron Brasfield
Systems Administrator*



*Ty Buckner
Apprentice Lineman*



*Gina Choat, Customer
Service Representative*



*Chris Conrad
Lineman*



*Jerry Cunningham
Lineman*



*David DeLoach
Lineman*



*Tracy Etheridge, Executive
Administrative Assistant*



*Toni Gay, Customer
Service Representative*



*Ronnie Hunter
Lineman*



*Johnathan Kissell
Operations Superintendent*



*Ashton Land
Apprentice Lineman*



*Jessica Lee, Customer
Service Representative*



*Dallas Midkiff
Tree Service*



*Doris Montgomery
Customer Service
Representative*



*Chris Mooney
Head of Engineering*



*Bill Newman
Lineman*



*David Newman
Meter Technician*



*Stacy Nolen, Customer
Service Representative*



*Scott Ozment
Lineman*



*Chris Sanders
Lineman*



*Jenny Skinner
Ripley Office Manager
Accountant*



*Erin Smith
Purchasing*



*Valerie Turnbow
Accountant*



*Vanessa Williams
Billing Coordinator*



*Caleb Wright
Apprentice Lineman*



*Kami Wright
Halls Office Manager*

At right and on the cover:
Ripley Power and Light
linemen work on utility lines
on Jefferson Street.



JANUARY 2024

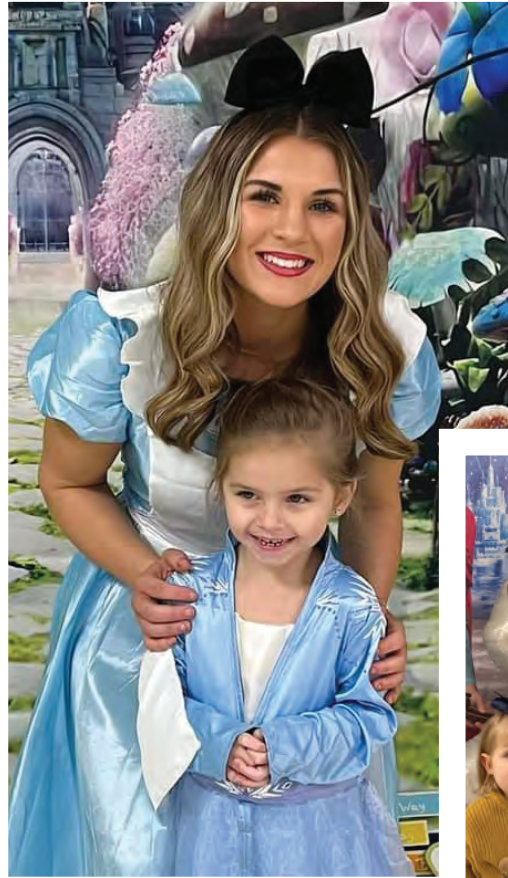
Ripley Office: 150 S. Main St. • 731-635-2323
 Halls Office: 409 S. Church St. • 731-836-7595
 Web: ripleypower.com



SUNDAY	MONDAY	TUESDAY	WEDNESDAY	THURSDAY	FRIDAY	SATURDAY
31	New Year's Day 1 No School <i>RPL Offices Closed</i>	Winter Break, No School 2	Winter Break, No School 3 	Lauderdale Co. School Board, 6pm Teacher In-Service Day No School 4	Professional Dev. Day 5 No School	6
7	Gates Board, 6:30pm Halls Board, 7pm Henning Board, 5pm Ripley Board, 6pm 8	9	10	RPL Board, noon 11 	12	13
14	Martin Luther King Jr. Day 15 No School <i>RPL Offices Closed</i>	16	17 	18	19	20
21	22	23	24	25 	26	27
28	29	30	31	1	DECEMBER S M T W T F S 1 2 3 4 5 6 7 8 9 10 11 12 13 14 15 16 17 18 19 20 21 22 23 24 25 26 27 28 29 30 31	FEBRUARY S M T W T F S 1 2 3 4 5 6 7 8 9 10 11 12 13 14 15 16 17 18 19 20 21 22 23 24 25 26 27 28 29

Donuts with Disney:

Youngsters, dressed as their favorite Disney personalities, met Disney characters and enjoyed a light breakfast at Donuts with Disney. The event was a fundraiser for the Ripley High School softball team.



FEBRUARY 2024

Ripley Office: 150 S. Main St. • 731-635-2323
 Halls Office: 409 S. Church St. • 731-836-7595
 Web: ripleypower.com



SUNDAY	MONDAY	TUESDAY	WEDNESDAY	THURSDAY	FRIDAY	SATURDAY
28	29	30	31	Lauderdale Co. School Board, 6pm 1	Groundhog Day 2 	3
4	Gates Board, 6:30pm 5 Halls Board, 7pm Henning Board, 5pm Ripley Board, 6pm	6	7	RPL Board, noon 8	9 	10
11	12	13	Valentine's Day 14 Ash Wednesday	15	16 	17
18	Presidents' Day 19 No School <i>RPL Offices Closed</i>	20	21	22	23	24 
25	26	27	28	29	JANUARY S M T W T F S 1 2 3 4 5 6 7 8 9 10 11 12 13 14 15 16 17 18 19 20 21 22 23 24 25 26 27 28 29 30 31	MARCH S M T W T F S 1 2 3 4 5 6 7 8 9 10 11 12 13 14 15 16 17 18 19 20 21 22 23 24 25 26 27 28 29 30 31



Marketing 1 students at Halls High School taste-test generic versus name-brand foods.



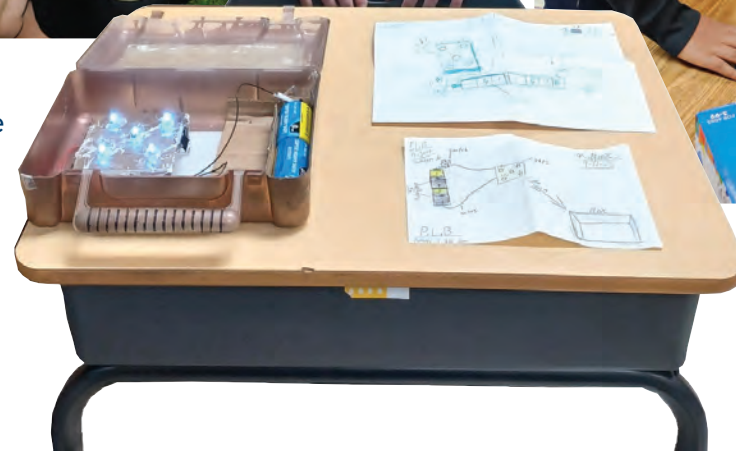
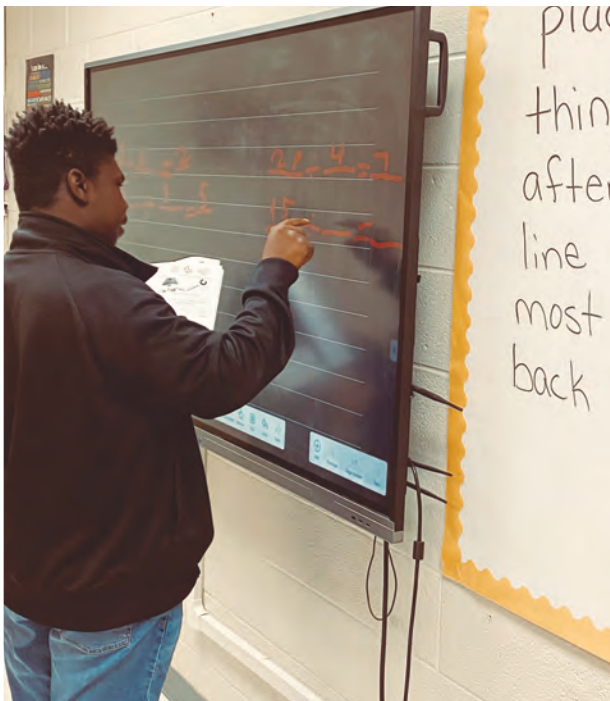
Ripley Middle School Excel students prepare for a mock trial.



Ripley Middle School students, above and below, experiment with different structure types during LEGO day in STEM class.



At left, a Ripley Middle School student works out math problems on the interactive whiteboard. The Halls High School golf team, above, gathers for a team photo. At right, Kaegan, a Ripley Middle School student, shows the "portable light box" he created as a science experiment



MARCH 2024

Ripley Office: 150 S. Main St. • 731-635-2323
 Halls Office: 409 S. Church St. • 731-836-7595
 Web: ripleypower.com



SUNDAY	MONDAY	TUESDAY	WEDNESDAY	THURSDAY	FRIDAY	SATURDAY
FEBRUARY S M T W T F S 1 2 3 4 5 6 7 8 9 10 11 12 13 14 15 16 17 18 19 20 21 22 23 24 25 26 27 28 29	APRIL S M T W T F S 1 2 3 4 5 6 7 8 9 10 11 12 13 14 15 16 17 18 19 20 21 22 23 24 25 26 27 28 29 30	27	28	29	1	2
3 	4 Gates Board, 6:30pm Halls Board, 7pm Henning Board, 5pm Ripley Board, 6pm	5 Presidential Preference Primary and Lauderdale County Primary Elections	6 Pathways to Possibilities 8th Grade Career Fair Lauderdale Co. School Board, 6pm	7 Pathways to Possibilities 8th Grade Career Fair	8	9 Roaring '20s, 7pm, Veterans' Museum
Daylight Saving Time Begins 10 	11 Spring Break, No School	12 Spring Break, No School	13 Spring Break, No School	14 Spring Break, No School RPL Board, noon	15 Spring Break, No School	16
St. Patrick's Day 17	18	19 First Day of Spring	20	21	22	23
Palm Sunday 24 Easter 31	25 	26	27	28	29 Good Friday No School RPL Offices Closed	30



NATIONAL
LINEMAN
 APPRECIATION DAY



Joey Beavers
 Lineman



Matthew Bell
 Apprentice Lineman



Ty Buckner
 Apprentice Lineman



Chris Conrad
 Lineman



Jerry Cunningham
 Lineman



David Deloach
 Lineman



Ronnie Hunter
 Lineman



Johnathan Kissell
 Operations
 Superintendent



Ashton Land
 Apprentice Lineman



Dallas Midkiff
 Tree Service



Bill Newman
 Lineman



David Newman
 Meter Technician



Scott Ozment
 Lineman



Chris Sanders
 Lineman



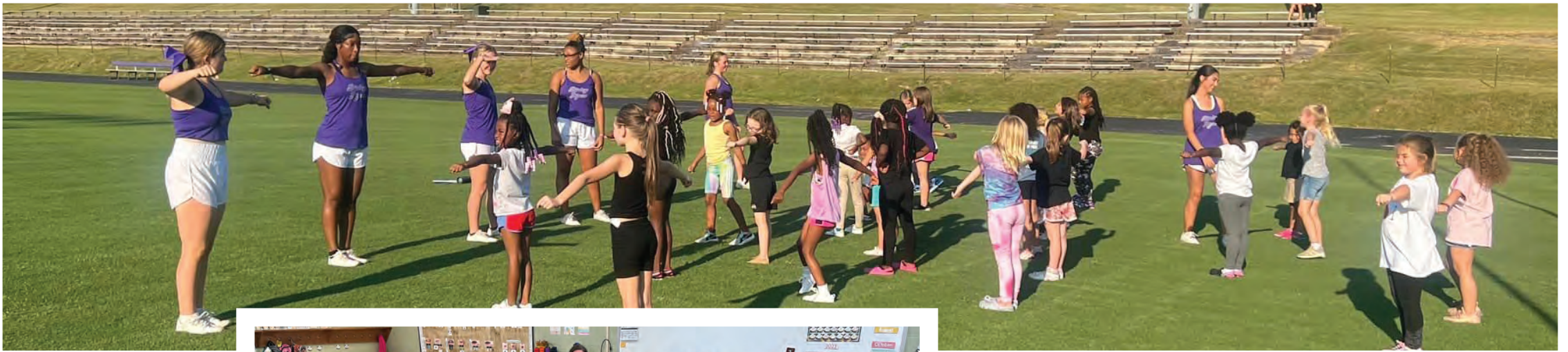
Caleb Wright
 Apprentice Lineman

APRIL 2024

Ripley Office: 150 S. Main St. • 731-635-2323
 Halls Office: 409 S. Church St. • 731-836-7595
 Web: ripleypower.com



SUNDAY	MONDAY	TUESDAY	WEDNESDAY	THURSDAY	FRIDAY	SATURDAY
MARCH S M T W T F S 1 2 3 4 5 6 7 8 9 10 11 12 13 14 15 16 17 18 19 20 21 22 23 24 25 26 27 28 29 30 31	April Fools' Day 1 Gates Board, 6:30pm Henning Board, 5pm Ripley Board, 6pm 	2	3	Lauderdale Co. School Board, 6pm 4	5	Miss Lauderdale Co. Tomato Festival Pageants 6
7	Halls Board, 7pm 8 	9	10	RPL Board, noon 11	12	13
14	Tax Day 15 	16	Ladies' Spring Luncheon, noon, Veterans' Museum 17	Lineman Appreciation Day 18	Arbor Day 19 Lauderdale Chamber ECD Annual Membership Banquet	20
21	Earth Day 22	23	Administrative Professionals' Day 24 	25	26	27
28	29	30	1	2	3	MAY S M T W T F S 1 2 3 4 5 6 7 8 9 10 11 12 13 14 15 16 17 18 19 20 21 22 23 24 25 26 27 28 29 30 31



Student Life: Ripley High School cheerleaders, above, hold a camp. Halls High School students in the Chick-fil-A Leader Academy, were part of a national, one million book giveaway. All kindergarten and first grade students received a free book, "I Am Kind." Below, club members shared the goals they wanted to complete by the end of the school year.



MAY 2024

Ripley Office: 150 S. Main St. • 731-635-2323
 Halls Office: 409 S. Church St. • 731-836-7595
 Web: ripleypower.com



SUNDAY	MONDAY	TUESDAY	WEDNESDAY	THURSDAY	FRIDAY	SATURDAY
APRIL S M T W T F S 1 2 3 4 5 6 7 8 9 10 11 12 13 14 15 16 17 18 19 20 21 22 23 24 25 26 27 28 29 30	29	30	1	National Day of Prayer 2 Lauderdale Co. School Board, 6pm	3	Car Show, Veterans' Museum 4
Cinco de Mayo 5	Gates Board, 6:30pm Halls Board, 7pm Henning Board, 5pm Ripley Board, 6pm 6	7	8	RPL Board, noon 9	10	11
Mother's Day 12	13	14	End-of-School Spring Carnival, Lauderdale Co. Fairgrounds 15	End-of-School Spring Carnival Ripley High School Graduation 16	End-of-School Spring Carnival Halls High School Graduation 17	Armed Forces Day End-of-School Spring Carnival 18
19	20	21	22	Memorial Day Ceremony, 2pm, Veterans' Museum 23	Last Day of School 24	25
26	Memorial Day <i>RPL Offices Closed</i> 27	28	29	30	31	JUNE S M T W T F S 1 2 3 4 5 6 7 8 9 10 11 12 13 14 15 16 17 18 19 20 21 22 23 24 25 26 27 28 29 30



City Park: The swimming pool in Ripley's City Park is a favorite destination in hot weather.

JUNE 2024

Ripley Office: 150 S. Main St. • 731-635-2323
 Halls Office: 409 S. Church St. • 731-836-7595
 Web: ripleypower.com



SUNDAY	MONDAY	TUESDAY	WEDNESDAY	THURSDAY	FRIDAY	SATURDAY
MAY S M T W T F S 1 2 3 4 5 6 7 8 9 10 11 12 13 14 15 16 17 18 19 20 21 22 23 24 25 26 27 28 29 30 31	JULY S M T W T F S 1 2 3 4 5 6 7 8 9 10 11 12 13 14 15 16 17 18 19 20 21 22 23 24 25 26 27 28 29 30 31	28	29	30	31	1
2	Gates Board, 6:30pm 3 Halls Board, 7pm Henning Board, 5pm Ripley Board, 6pm	4	5	Lauderdale Co. School Board, 6pm 6 	7	8
9	10	11	12	RPL Board, noon 13 	Flag Day 14 Flag Day Program, 2pm, Veterans' Museum 	15
Father's Day 16	17	18	Juneteenth 19 <i>RPL Offices Closed</i>	First Day of Summer 20	Golf Tournament, 21 1pm, Veterans' Museum 	22
 30	24	25	26	27	Lauderdale Co. Tomato Festival Golf Tournament, Rolling Hills Country Club 28 	29



Ripley Tomato Festival: There's just something in the soil of Lauderdale County that grows great tomatoes. The annual Tomato Festival, which includes concerts, children's activities, a golf tournament and much more, celebrates Ripley's famous tomatoes.

JULY 2024

Ripley Office: 150 S. Main St. • 731-635-2323
 Halls Office: 409 S. Church St. • 731-836-7595
 Web: ripleypower.com



SUNDAY	MONDAY	TUESDAY	WEDNESDAY	THURSDAY	FRIDAY	SATURDAY
<p>JUNE</p> <p>S M T W T F S</p> <p>1</p> <p>2 3 4 5 6 7 8</p> <p>9 10 11 12 13 14 15</p> <p>16 17 18 19 20 21 22</p> <p>23 24 25 26 27 28 29</p> <p>30</p>	<p>Gates Board, 6:30pm 1</p> <p>Halls Board, 7pm</p> <p>Henning Board, 5pm</p> <p>Ripley Board, 6pm</p>	2	3	<p>Independence Day 4</p> <p><i>RPL Offices Closed</i></p>	5	6
7	8	9	10	<p>Lauderdale Co. School Board, 6pm 11</p> <p>RPL Board, noon</p>	<p>Lauderdale Co. Tomato Festival 12</p>	<p>Lauderdale Co. Tomato Festival 13</p> 
14	15	16	17	18	19	20
21	22	23	24	25	26	27
						
28	29	30	31	1	2	<p>AUGUST</p> <p>S M T W T F S</p> <p>1 2 3</p> <p>4 5 6 7 8 9 10</p> <p>11 12 13 14 15 16 17</p> <p>18 19 20 21 22 23 24</p> <p>25 26 27 28 29 30 31</p>



Lauderdale County Fair: The annual county fair offers livestock shows, live music, food and rides. This year's fair is September 11-14



AUGUST 2024

Ripley Office: 150 S. Main St. • 731-635-2323
 Halls Office: 409 S. Church St. • 731-836-7595
 Web: ripleypower.com



SUNDAY	MONDAY	TUESDAY	WEDNESDAY	THURSDAY	FRIDAY	SATURDAY
JULY S M T W T F S 1 2 3 4 5 6 7 8 9 10 11 12 13 14 15 16 17 18 19 20 21 22 23 24 25 26 27 28 29 30 31	SEPTEMBER S M T W T F S 1 2 3 4 5 6 7 8 9 10 11 12 13 14 15 16 17 18 19 20 21 22 23 24 25 26 27 28 29 30	30	31	State Primary, County General and City of Ripley Elections Lauderdale Co. School Board, 6pm	1 2	3
4 	Gates Board, 6:30pm Halls Board, 7pm Henning Board, 5pm Ripley Board, 6pm	5 First Day of School	6	7	RPL Board, noon	8 9 10
11	12 	13	14	15	16	17
18	19 	20	21	22	Lauderdale Co. Fair Glow Golf Tournament	23 24
25	26 	27	28	29	30	31



Labor Day Parade: Whether it's on legs or wheels, you're likely to find it in the the annual Labor Day parade around Ripley Court Square.



SEPTEMBER 2024

Ripley Office: 150 S. Main St. • 731-635-2323
 Halls Office: 409 S. Church St. • 731-836-7595
 Web: ripleypower.com



SUNDAY	MONDAY	TUESDAY	WEDNESDAY	THURSDAY	FRIDAY	SATURDAY
1	Labor Day No School <i>RPL Offices Closed</i>	Gates Board, 6:30pm Halls Board, 7pm Ripley Board, 6pm		Lauderdale Co. School Board, 6pm		
8	Henning Board, 5pm		Patriot Day Lauderdale Co. Fair	RPL Board, noon Lauderdale Co. Fair	Lauderdale Co. Fair	Lauderdale Co. Fair
15						5K and 1-Mile Run, 9am, Veterans' Museum
First Day of Autumn						
29					AUGUST S M T W T F S 1 2 3 4 5 6 7 8 9 10 11 12 13 14 15 16 17 18 19 20 21 22 23 24 25 26 27 28 29 30 31	OCTOBER S M T W T F S 1 2 3 4 5 6 7 8 9 10 11 12 13 14 15 16 17 18 19 20 21 22 23 24 25 26 27 28 29 30 31



Squarecrows: If it's October, it's time for community groups and businesses to build their squarecrows so they can be displayed on the Ripley Courthouse lawn.



OCTOBER 2024

Ripley Office: 150 S. Main St. • 731-635-2323
 Halls Office: 409 S. Church St. • 731-836-7595
 Web: ripleypower.com



SUNDAY	MONDAY	TUESDAY	WEDNESDAY	THURSDAY	FRIDAY	SATURDAY
SEPTEMBER S M T W T F S 1 2 3 4 5 6 7 8 9 10 11 12 13 14 15 16 17 18 19 20 21 22 23 24 25 26 27 28 29 30	30	Squarecrows all month, Lauderdale Co. Courthouse 1	2	Lauderdale Co. School Board, 6pm 3	4	5
6	Gates Board, 6:30pm Halls Board, 7pm Henning Board, 5pm Ripley Board, 6pm Fall Break, No School 7	Fall Break, No School 8	Fall Break, No School 9	Fall Break, No School 10 RPL Board, noon	Fall Break, No School 11	12
13	Columbus Day 14	15	Boss's Day 16	20th Annual Ladies' Fall Luncheon, noon, Veterans' Museum 17	18	19
20	21	22	23	24	25	26
27	28	29	30	Halloween 31 Trunk or Treat, Downtown Ripley	1	NOVEMBER S M T W T F S 1 2 3 4 5 6 7 8 9 10 11 12 13 14 15 16 17 18 19 20 21 22 23 24 25 26 27 28 29 30



Veterans Day: The community celebrates and honors its veterans with an annual parade in downtown Ripley.

NOVEMBER 2024

Ripley Office: 150 S. Main St. • 731-635-2323
 Halls Office: 409 S. Church St. • 731-836-7595
 Web: ripleypower.com



SUNDAY	MONDAY	TUESDAY	WEDNESDAY	THURSDAY	FRIDAY	SATURDAY
OCTOBER S M T W T F S 1 2 3 4 5 6 7 8 9 10 11 12 13 14 15 16 17 18 19 20 21 22 23 24 25 26 27 28 29 30 31	DECEMBER S M T W T F S 1 2 3 4 5 6 7 8 9 10 11 12 13 14 15 16 17 18 19 20 21 22 23 24 25 26 27 28 29 30 31	29	30	31	All Saints' Day 1 Professional Development Day, No School County-Wide Christmas Open Houses	County-Wide Christmas Open Houses 2
Daylight Saving Time Ends 3	Gates Board, 6:30pm 4 Halls Board, 7pm Henning Board, 5pm Ripley Board, 6pm	Election Day 5 (Presidential, November General and Town of Gates elections)	6	Lauderdale Co. School Board, 6pm 7	8	9
Veterans Day Program, 2pm, Veterans' Museum 10	Veterans Day 11 Veterans Parade, Downtown Ripley <i>RPL Offices Closed</i>	12	13	RPL Board, noon 14	15	16
17	18	19	20	21	22	23
24	Thanksgiving Break, No School 25	Thanksgiving Break, No School 26	Thanksgiving Break, No School 27	Thanksgiving 28 No School <i>RPL Offices Closed</i>	Native American Heritage Day 29 No School <i>RPL Offices Closed</i>	Shop Small Saturday Halls Tree Lighting 30



The holidays: At top, Helen Tucker Center members at a performance; above, greetings from Homstyle Christmas; and below, Chamber staff visits a local school.

The Grinch on a firetruck, left, and a Ripley Power and Light bucket truck, above, participate in the annual Christmas parade.



Ice Skating, above, and roasting marshmallows, right, are two of the many family activities during Homstyle Christmas.

DECEMBER 2024

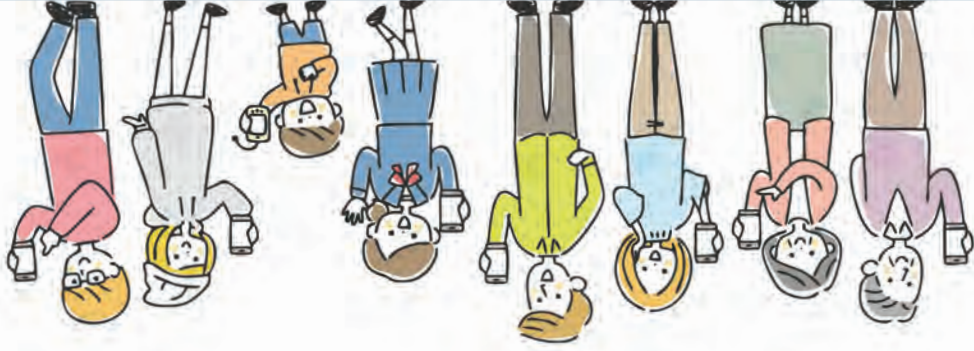
Ripley Office: 150 S. Main St. • 731-635-2323
 Halls Office: 409 S. Church St. • 731-836-7595
 Web: ripleypower.com



SUNDAY	MONDAY	TUESDAY	WEDNESDAY	THURSDAY	FRIDAY	SATURDAY
1 	2 Gates Board, 6:30pm Halls Board, 7pm Henning Board, 5pm Ripley Board, 6pm	3 Halls Christmas Parade	4 Christmas Memories, noon, Veterans' Museum	5 Lauderdale Co. School Board, 6pm Ripley Christmas Parade	6 Henning Christmas Parade	7 Pearl Harbor Remembrance Day
8 	9	10	11	12 RPL Board, Noon	13 Lauderdale Chamber ECD Christmas Open House Homestyle Christmas, Downtown Ripley	14 Homestyle Christmas, Downtown Ripley
15 Homestyle Christmas, Downtown Ripley 	16	17	18	19	20 Winter Break, No School	21 First Day of Winter
22 	23 Winter Break, No School all week	24 Christmas Eve	25 Christmas Day <i>RPL Offices Closed</i>	26 <i>RPL Offices Closed</i>	27	28
29	30 Winter Break, No School 	31 New Year's Eve No School	1	2	NOVEMBER S M T W T F S 1 2 3 4 5 6 7 8 9 10 11 12 13 14 15 16 17 18 19 20 21 22 23 24 25 26 27 28 29 30	JANUARY S M T W T F S 1 2 3 4 5 6 7 8 9 10 11 12 13 14 15 16 17 18 19 20 21 22 23 24 25 26 27 28 29 30 31

Do we have your number?

ALL of your numbers?



Ripley Power and Light encourages customers to ...

✓ STEP ONE:

- Update all phone numbers in your household: landlines and cellphone numbers.
- Call 731-635-2323 or visit www.ripleypower.com under the 'Report an Outage' tab.

✓ STEP TWO:

- Save our number – 888-655-1841 – in your cellphone.
- To opt in, text #RIPLEY to 888-655-1841.
- You'll receive the message, "Welcome to Ripley Power and Light's text msg service ..."

HAVE AN OUTAGE?

The next time you have an outage, just text #OUT to 888-655-1841.

Ripley Power and Light's Outage Management system will know your location, and we'll immediately begin our efforts to locate the cause of the outage and restore your power.

Emergencies

Ripley Power and Light employees are on call 24 hours a day to provide reliable and quality electric service. We are prepared to respond quickly in an emergency. Call us immediately at 731-635-2323 or 731-836-7595 if the electric power is out, a power line is down or if there is another electrical emergency.



Ripley Power & Light Co.
150 S. Main St.
Ripley, TN 38063